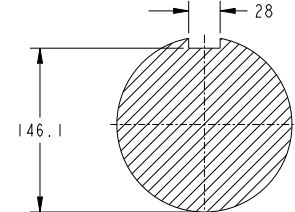
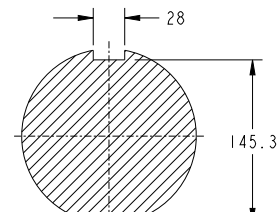
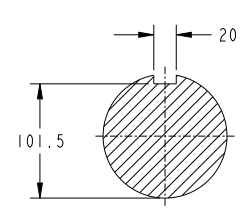
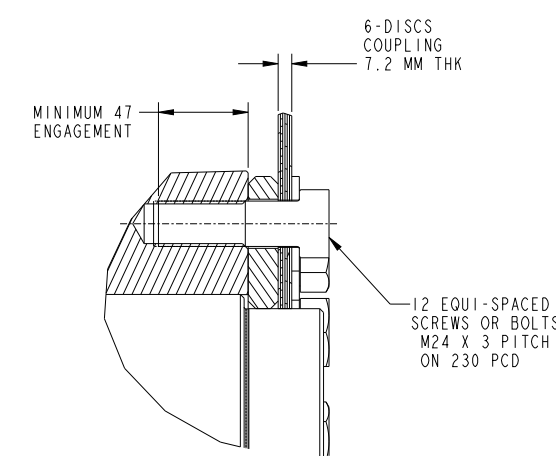


- NOTES:
1. SHAFT STIFFNESS:- THE STIFFNESS OF THE SHAFT BETWEEN THE MAIN ROTOR CORE  $\phi$  AND THE COUPLING HUB FACE IS  $0.9692 \times 10^8$  kgcm/radian (STIFFENING EFFECT OF MAIN ROTOR CORE IS NOT INCLUDED IN THIS FIGURE)
  2. SHAFT MATERIAL:- STEEL - C40E TO BSEN 10083-2 2006 (APPROVED BY MARINE AUTHORITIES WHEN APPROPRIATE)
  3. MAXIMUM RECOMMENDED VIBRATORY STRESS LEVEL IN THE SHAFT IS  $34.47 \times 10$  N/m<sup>2</sup> FOR SPEED RANGE OF 0.95 TO 1.1 X NOMINAL SPEED AND  $68.94 \times 10$  N/m<sup>2</sup> FOR RUN THROUGH CONDITIONS, FOR INDUSTRIAL MACHINES. FOR MARINE AUTHORITIES, THEIR APPROPRIATE RULES WILL APPLY
  4. CUMMINS GENERATOR TECHNOLOGIES LTD SHOULD BE NOTIFIED OF ANY ROTORS NOT COMPLYING WITH THESE RULES
  5. CUMMINS GENERATOR TECHNOLOGIES LTD BALANCE ROTORS TO COMPLY WITH INTERNATIONAL STD BS ISO 1940 PARTS 1 AND 2. BALANCE GRADE 2.5
  6. FOR UNBALANCED MAGNETIC PULL (U.M.P) FORCES PLEASE CONTACT CUMMINS GENERATOR TECHNOLOGIES LTD

COUPLING SAE NO	COUPLING DIMENSIONS		COUPLING DISC WEIGHT KG	COUPLING SPACER WEIGHT KG	COUPLING ASSEMBLY WEIGHT KG	COUPLING STIFFNESS 6-PLATES kgcm/rad	COUPLING DISC WR <sup>2</sup> kg m <sup>2</sup>
	XX	YY					
14	467	25	1.39	7.76	21.75	$13.956 \times 10^8$	0.265
18	571.412	15.88	2.20	4.78	23.38	$12.113 \times 10^8$	0.535

COMPONENT	Wt Kg	WR <sup>2</sup> (KGM <sup>2</sup> )
EX. ROTOR	38.66	0.5785
MAIN ROTOR	529.92	16.59
FAN	19.03	0.8523
SHAFT	170.3	0.4769
HUB	37.45	0.4827
P.M. EXCITER ROTOR	4	0.011
P.M. STUB SHAFT	0.859	0.0003
TOTAL	800.22	18.99

CONVERSION FACTORS		
TO CONVERT	TO	DIVIDE BY
kg	lb	0.453592
kg m <sup>2</sup>	lb ft <sup>2</sup>	0.04214
kgcm/rad	lbin/rad	1.1521246
N/m <sup>2</sup>	lbf/in <sup>2</sup>	6894.76



**Cummins Generator Technologies**

DIMENSIONS ARE IN: MILLIMETERS  
 [ ] ARE IN: -

SIZE: A1 SCALE: 1:2.8

DRAWING SPECIFICATION DESCRIPTION: S6LID-D, 4P, 1B

DIMENSIONING AND TOLERANCING PER: ASME Y14.5-2009

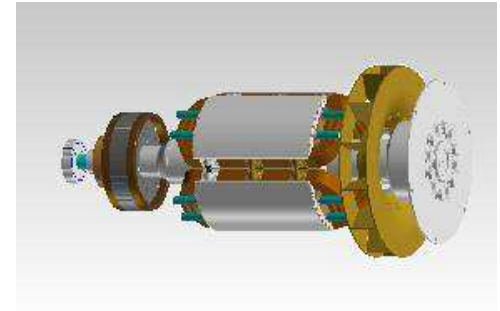
THIRD ANGLE PROJECTION

CAD SYSTEM: PTC® Creo® Parametric



**Part Number: A057G549**

Change Notice	CN00077355	Alternates	
Manufacturer Part (MEP)	No	Usage	Production Only
Release Phase Code	Production (P)	Drawing Specification	Number: DS47118954
External Regulations	No External Regulation		Revision: A



3D image provided when available for visual reference only.

**Drawing Revision Information**

<p><b>Description of Change(s)</b>          Note: Change information is provided for reference only and does not supersede the drawing's primary content.</p>
<p>MINOR AMENDMENTS</p>
<p>ADMINISTRATIVE CHANGE(S) TO PART ATTRIBUTES, BILL OF MATERIAL, OR ASSOCIATED SPECIFICATIONS.</p>

**Drawing Authorization**

Drafter	Aishwarya Rajaram Shelar	Date	10JAN2023
Checker	Kuldeep Dilip Pawar	Date	10JAN2023
Approver	NO APPROVAL REQUIRED	Date	

Document Generated: 10JAN2023 10:12 GMT