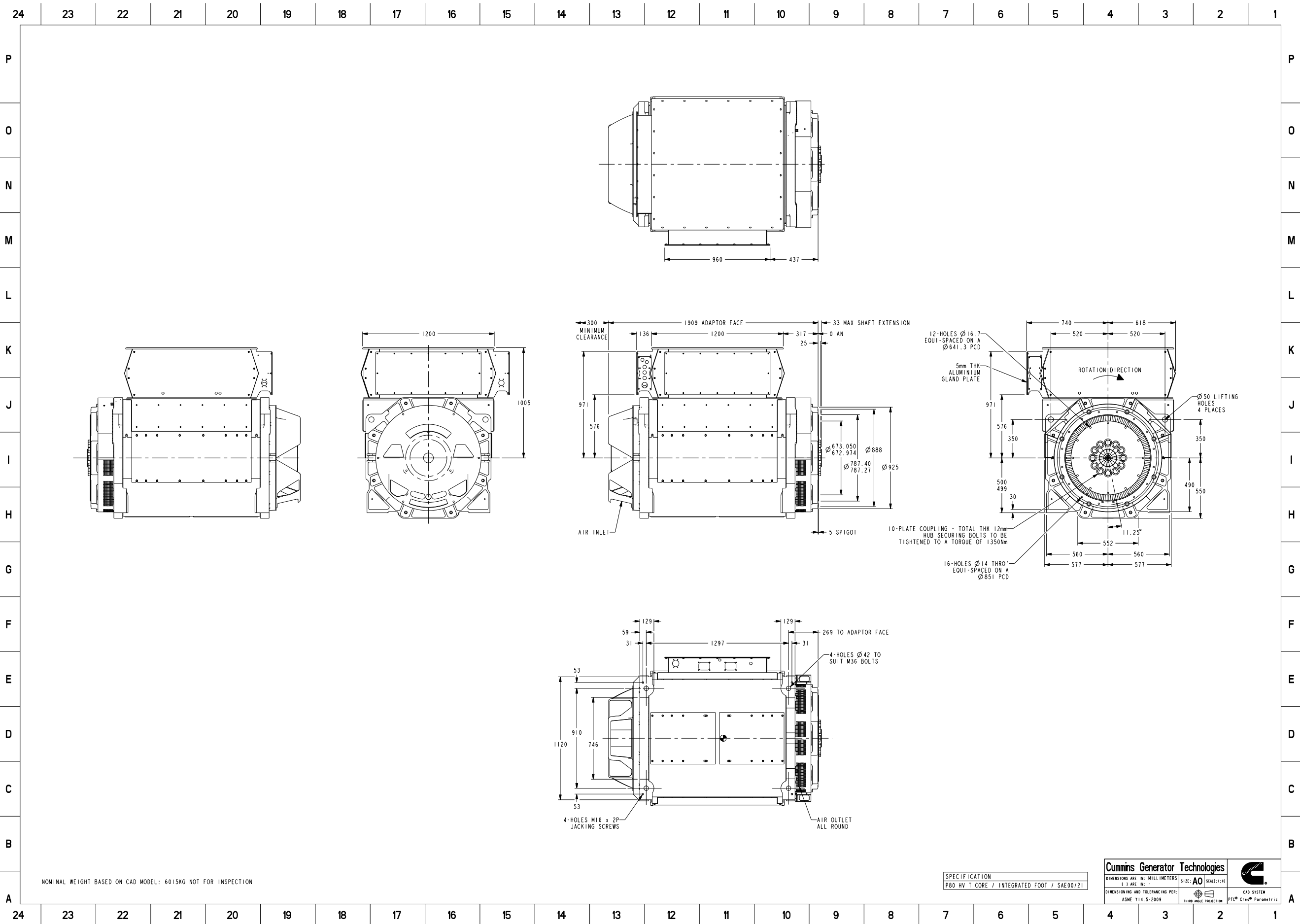


NOMINAL WEIGHT BASED ON CAD MODEL: 6015KG NOT FOR INSPECTION

SPECIFICATION
P80 HV T CORE / INTEGRATED FOOT / SAE00/21

Cummins Generator Technologies			
DIMENSIONS ARE IN: MILLIMETERS () ARE IN: -	SIZE: A2	SCALE: 1:10	
DIMENSIONING AND TOLERANCING PER: ASME Y14.5-2009	 THIRD ANGLE PROJECTION		CAD SYSTEM PTC® Creo® Parametric

Document Generated: 03JUN2021 09:21 GMT



Document Generated: 03JUN2021 09:21 GMT



Part Number: A043K238

Change Notice	CN00034330	Alternates	
Manufacturer Part (MEP)	No	Usage	Production Only
Release Phase Code	Production (P)	Drawing Specification	DSA043K238
External Regulations	No External Regulation		

3D image provided when available for visual reference only.

Associated Specifications

Number	Name	Type	Category	Sub-Category
ESA030B356	SPECIFICATION,MATERIAL	Engineering Specification	Material Specification	Prohibited and Restricted Prohibited and Restricted

Drawing Revision Information

Description of Change(s)
END BRACKETS, WEIGHT, C OF G AND DRAWING BORDER UPDATED

Drawing Authorization

Drafter	Andrew Savill	Date	03JUN2021
Checker	Tony Charles Clarke	Date	03JUN2021
Approver	NO APPROVAL REQUIRED	Date	

Document Generated: 03JUN2021 09:21 GMT