

AutoCad

4

3

2

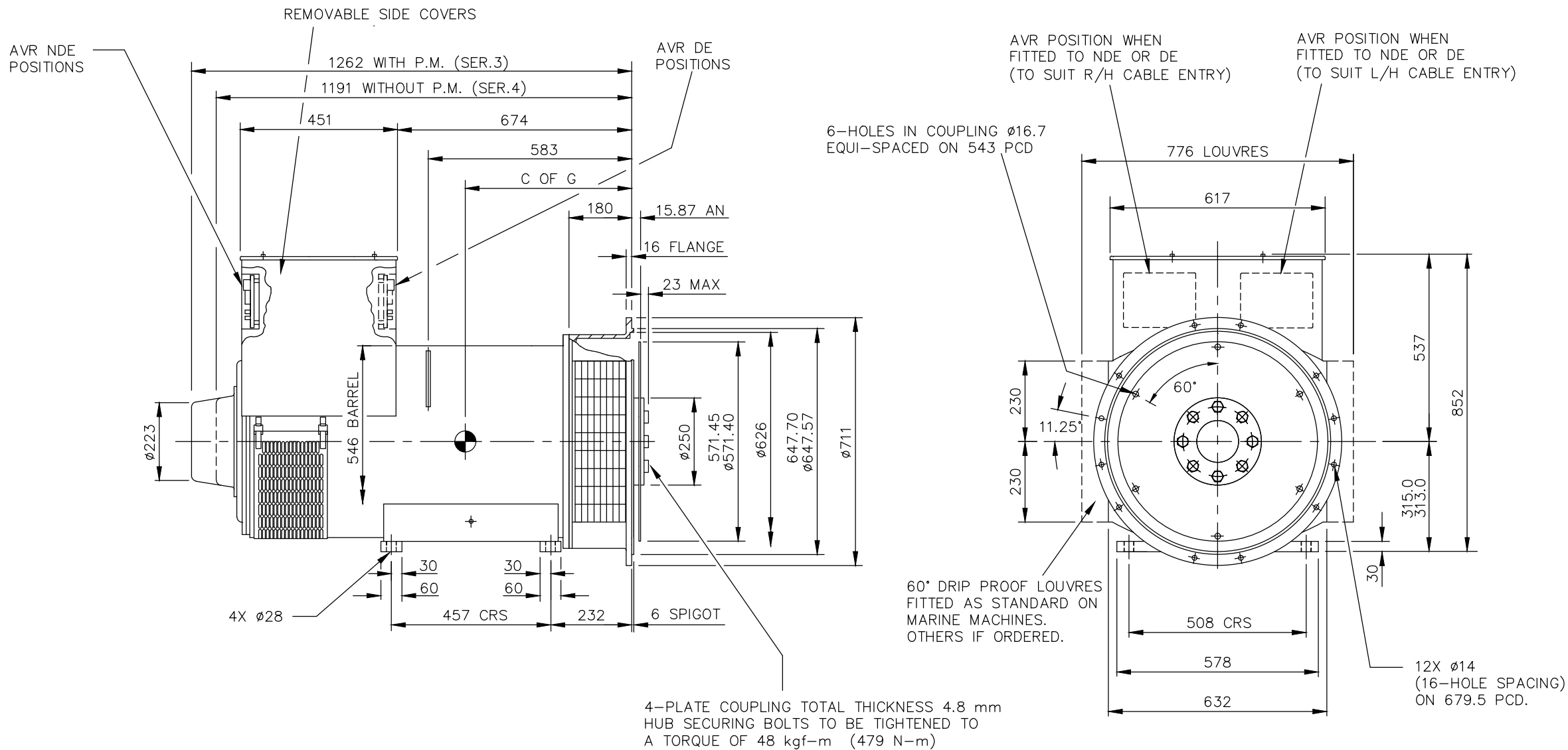
1

CORE	WEIGHT (KG)	C OF G (MM)
F	1160	530

REL NO	REV	NO	REVISION	DWN	CKD	APVD	DATE
ECO-172149	B	1	ZONE D4, ADDED WEIGHT (1160 KG) FOR F CORE	NK	PN	S_NARAYANAN	07SEP17

NOTE: -

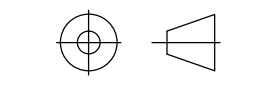
- CUSTOMER MAY CUT CABLE ENTRY HOLES AS REQUIRED IN ANY OF THE FOUR TERMINAL BOX SIDES SUBJECT TO POSITION OF AVR, TERMINALS, ETC.



UNLESS OTHERWISE SPECIFIED, ALL DIMENSIONS ARE IN MILLIMETERS

SIM TO 41-4546
DO NOT SCALE PRINT

SCALE
1:10



THIS DOCUMENT (AND THE INFORMATION SHOWN THEREON) IS CONFIDENTIAL AND PROPRIETARY AND SHALL NOT BE DISCLOSED TO OTHERS IN HARD COPY OR ELECTRONIC FORM, REPRODUCED BY ANY MEANS, OR USED FOR ANY PURPOSE WITHOUT WRITTEN CONSENT OF CUMMINS INC.

DRAWN S_BALAMURUGAN
CHECKED A_BIRARI
APPROVED B_SURVE
DATE 06FEB17



CUMMINS GENERATOR TECHNOLOGIES
DRAWING, GENERAL ASSEMBLY
S4 F 1-BRG SAE 0/18 STD T/BOX

FOR INTERPRETATION OF DIMENSIONING AND TOLERANCING, SEE ASME Y14.5-2009

SITE CODE
STA

DWG SIZE
A4
A057B666

CAD SHEET
1 of 1

4

3

2

1

A

A