

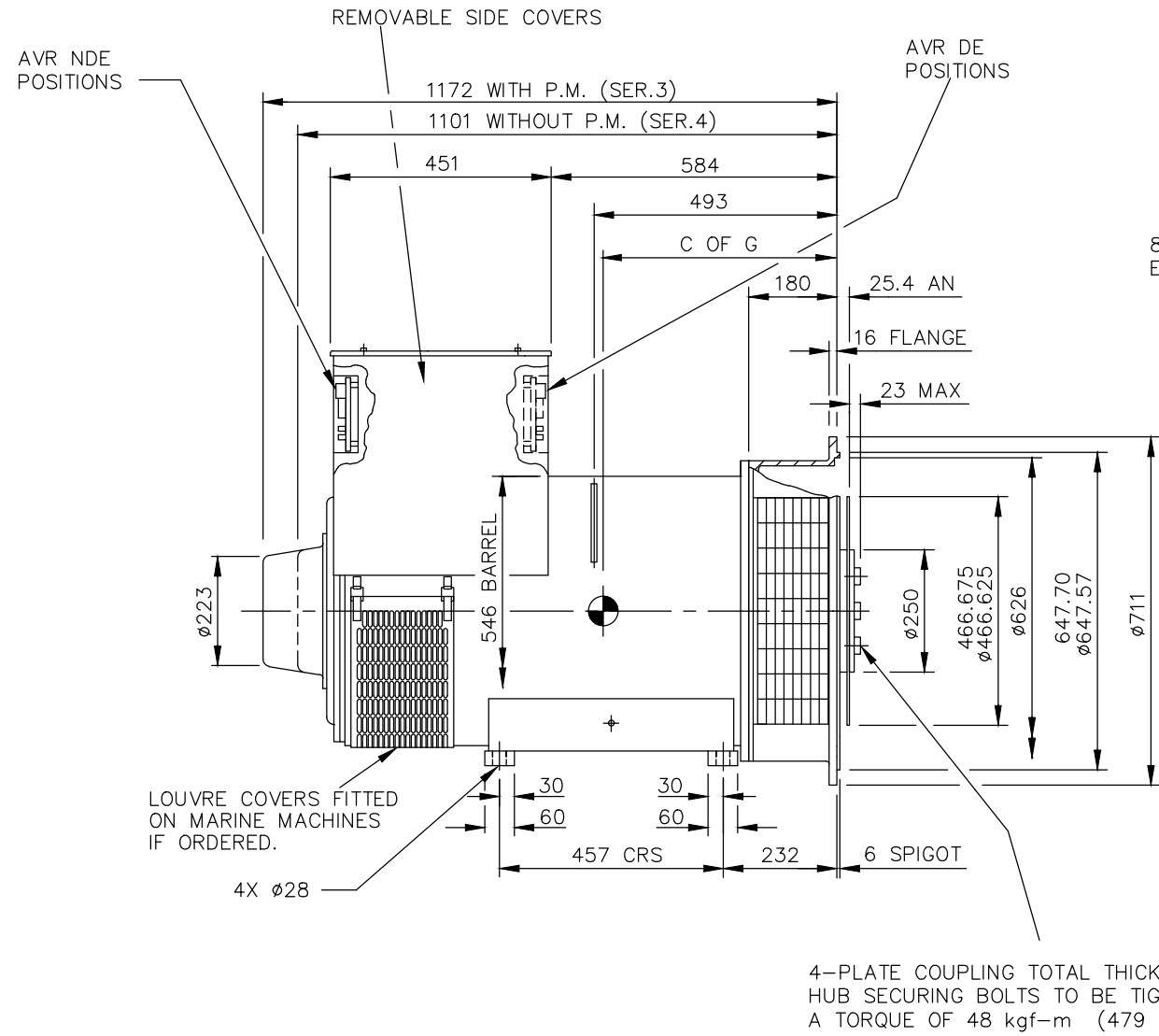
AutoCad

CORE	WEIGHT (KG)	C OF G (MM)
C	850	463
D	940	483
E	1024	504

REL NO	REV	NO	REVISION	DWN	CKD	APVD	DATE
ECO-172149	B	1	ZONE D4, ADDED WEIGHT (850 KG FOR C CORE)	NK	PN	S_NARAYANAN	08SEP17
			ZONE D4, ADDED WEIGHT (940 KG FOR D CORE)				
			ZONE D4, ADDED WEIGHT (1024 KG FOR E CORE)				

NOTE: -

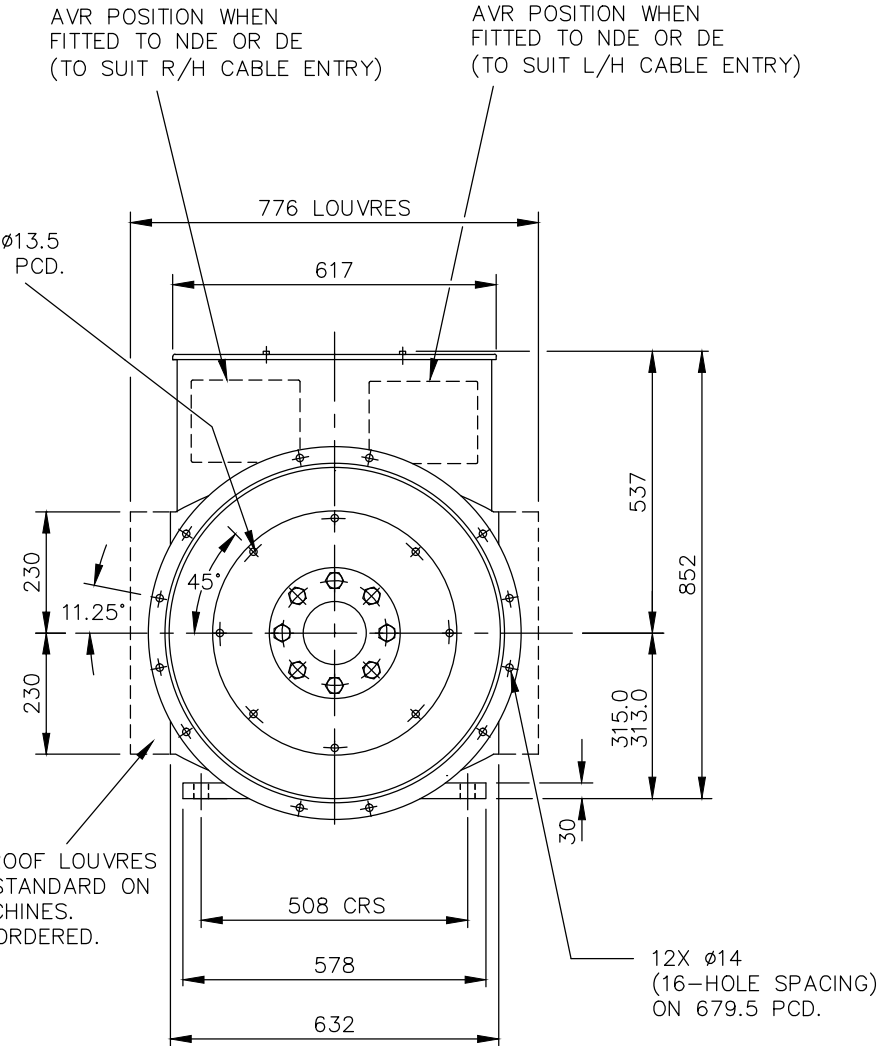
- CUSTOMER MAY CUT CABLE ENTRY HOLES AS REQUIRED IN ANY OF THE FOUR TERMINAL BOX SIDES SUBJECT TO POSITION OF AVR, TERMINALS, ETC.



8-HOLES IN COUPLING Ø13.5 EQUI-SPACED ON 438.1 PCD.

60° DRIP PROOF LOUVRES FITTED AS STANDARD ON MARINE MACHINES. OTHERS IF ORDERED.

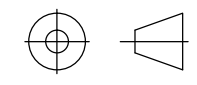
4-PLATE COUPLING TOTAL THICKNESS 4.8 mm HUB SECURING BOLTS TO BE TIGHTENED TO A TORQUE OF 48 kgf-m (479 N-m)



UNLESS OTHERWISE SPECIFIED, ALL DIMENSIONS ARE IN MILLIMETERS

SIM TO 41-4536
DO NOT SCALE PRINT

SCALE 1:10



THIS DOCUMENT (AND THE INFORMATION SHOWN THEREON) IS CONFIDENTIAL AND PROPRIETARY AND SHALL NOT BE DISCLOSED TO OTHERS IN HARD COPY OR ELECTRONIC FORM, REPRODUCED BY ANY MEANS, OR USED FOR ANY PURPOSE WITHOUT WRITTEN CONSENT OF CUMMINS INC.

DRAWN S_BALAMURUGAN
CHECKED A_BIRARI
APPROVED B_SURVE
DATE 03FEB17



CUMMINS GENERATOR TECHNOLOGIES

DRAWING, GENERAL ASSEMBLY
S4 CDE 1-BRG SAE 0/14 STD T/BOX

FOR INTERPRETATION OF DIMENSIONING AND TOLERANCING, SEE ASME Y14.5-2009

FIRST USED ON S4

SITE CODE STA

DWG SIZE A4

A057B657

CAD SHEET 1 OF 1