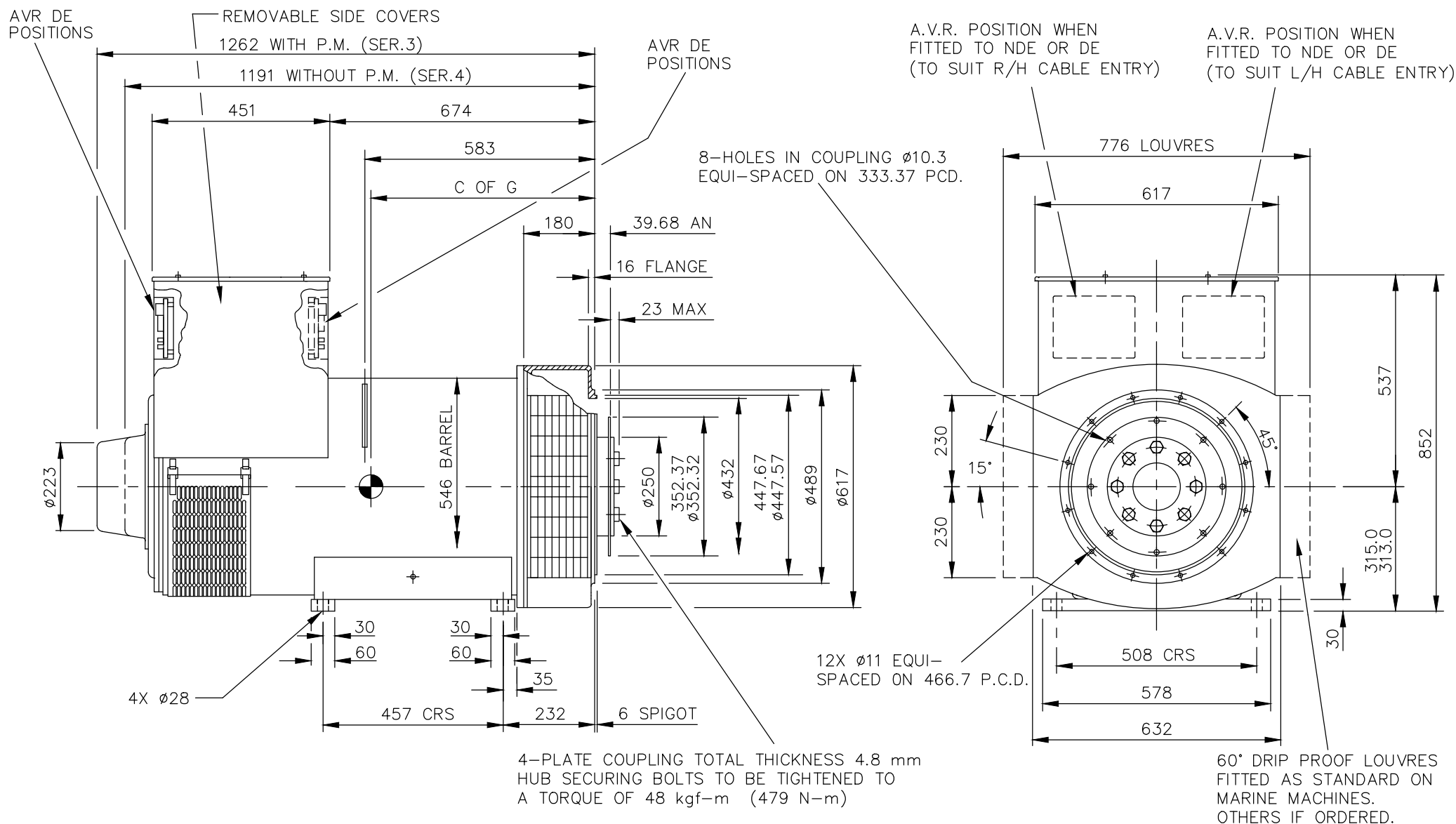


CORE	C OF G (mm)
F	530

REL NO	REV	NO	REVISION	DWN	CKD	APVD	DATE
ECO-167661	A	1	RELEASED FOR PRODUCTION	SB	AB	B_SURVE	31JAN17

NOTES: -

- CUSTOMER MAY CUT CABLE ENTRY HOLES AS REQUIRED IN ANY OF THE FOUR TERMINAL BOX SIDES SUBJECT TO POSITION OF A.V.R, TERMINALS ETC.



D

D

C

C

B

B

A

A

UNLESS OTHERWISE SPECIFIED, ALL DIMENSIONS ARE IN MILLIMETERS	SIM TO 41-4563	DRAWN S_BALAMURUGAN		CUMMINS GENERATOR TECHNOLOGIES		
	DO NOT SCALE PRINT	CHECKED A_BIRARI		DRAWING, GENERAL ASSEMBLY		
SCALE 1:10		APPROVED B_SURVE	SITE CODE	S4 F 1-BRG SAE 2/11.5 STD T/BOX		
THIS DOCUMENT (AND THE INFORMATION SHOWN THEREON) IS CONFIDENTIAL AND PROPRIETARY AND SHALL NOT BE DISCLOSED TO OTHERS IN HARD COPY OR ELECTRONIC FORM, REPRODUCED BY ANY MEANS, OR USED FOR ANY PURPOSE WITHOUT WRITTEN CONSENT OF CUMMINS INC.	FOR INTERPRETATION OF DIMENSIONING AND TOLERANCING, SEE ASME Y14.5-2009	DATE 31JAN17		STA	DWG SIZE A4	A057B593
		FIRST USED ON S4				