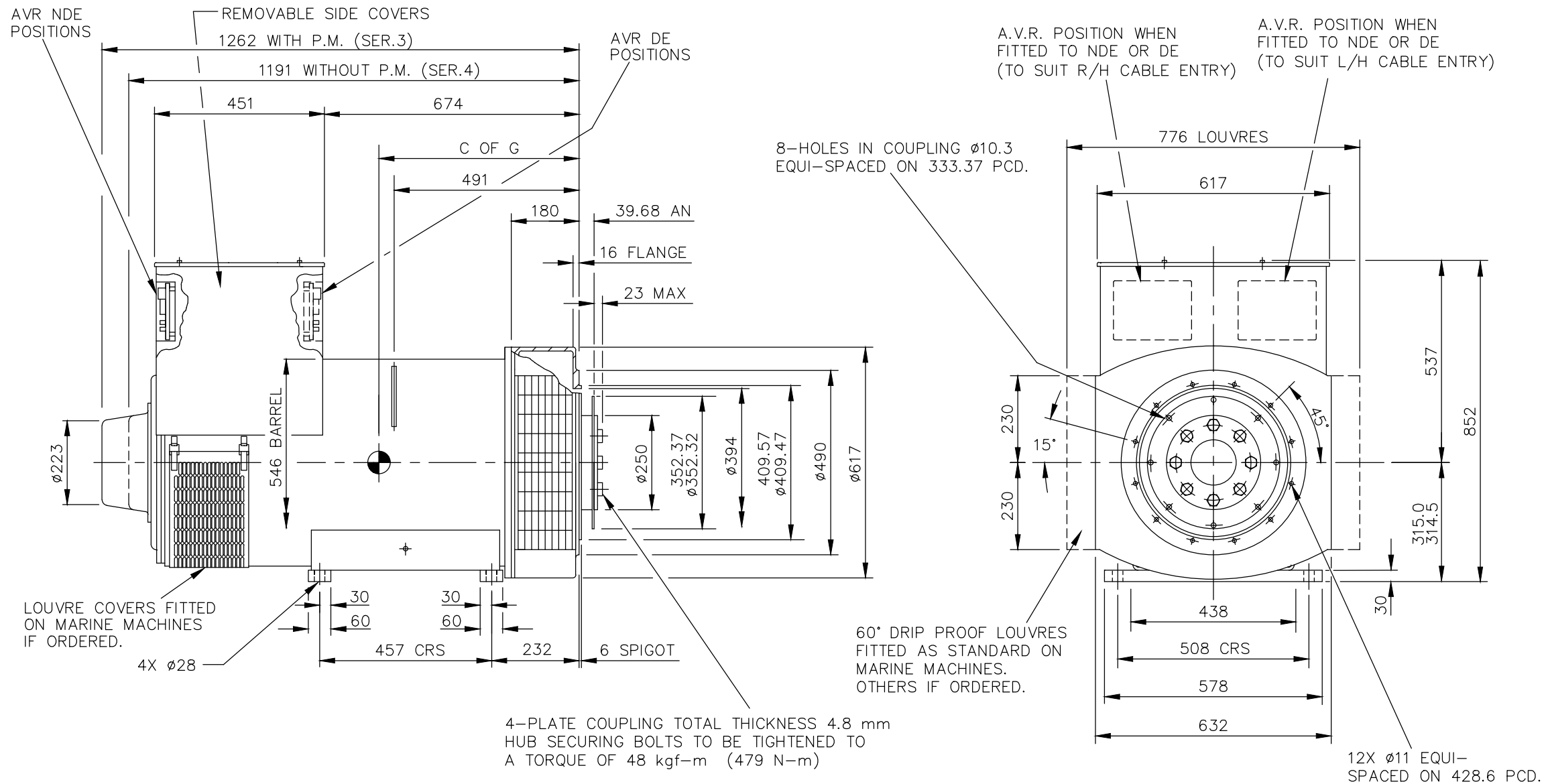


CORE	C OF G (mm)
F	530

REL NO	REV	NO	REVISION	DWN	CKD	APVD	DATE
ECO-167661	A	1	RELEASED FOR PRODUCTION	SB	AB	B_SURVE	31JAN17

NOTES: -

- CUSTOMER MAY CUT CABLE ENTRY HOLES AS REQUIRED IN ANY OF THE FOUR TERMINAL BOX SIDES SUBJECT TO POSITION OF A.V.R, TERMINALS ETC.



UNLESS OTHERWISE SPECIFIED, ALL DIMENSIONS ARE IN MILLIMETERS	SIM TO 41-4562	DRAWN	S_BALAMURUGAN		CUMMINS GENERATOR TECHNOLOGIES		
	DO NOT SCALE PRINT	CHECKED	A_BIRARI		DRAWING, GENERAL ASSEMBLY		
SCALE 1:10		APPROVED	B_SURVE	SITE CODE	S4 F 1-BRG SAE 3/11.5 STD T/BOX		
THIS DOCUMENT (AND THE INFORMATION SHOWN THEREON) IS CONFIDENTIAL AND PROPRIETARY AND SHALL NOT BE DISCLOSED TO OTHERS IN HARD COPY OR ELECTRONIC FORM, REPRODUCED BY ANY MEANS, OR USED FOR ANY PURPOSE WITHOUT WRITTEN CONSENT OF CUMMINS INC.	FOR INTERPRETATION OF DIMENSIONING AND TOLERANCING, SEE ASME Y14.5-2009	DATE	31JAN17	FIRST USED ON	STA	DWG SIZE	A4
				S4			A057B592
							CAD SHEET 1 OF 1