

AutoCad

4

3

2

1

CORE	C OF G (mm)	WEIGHT(KG)
F	530	1160

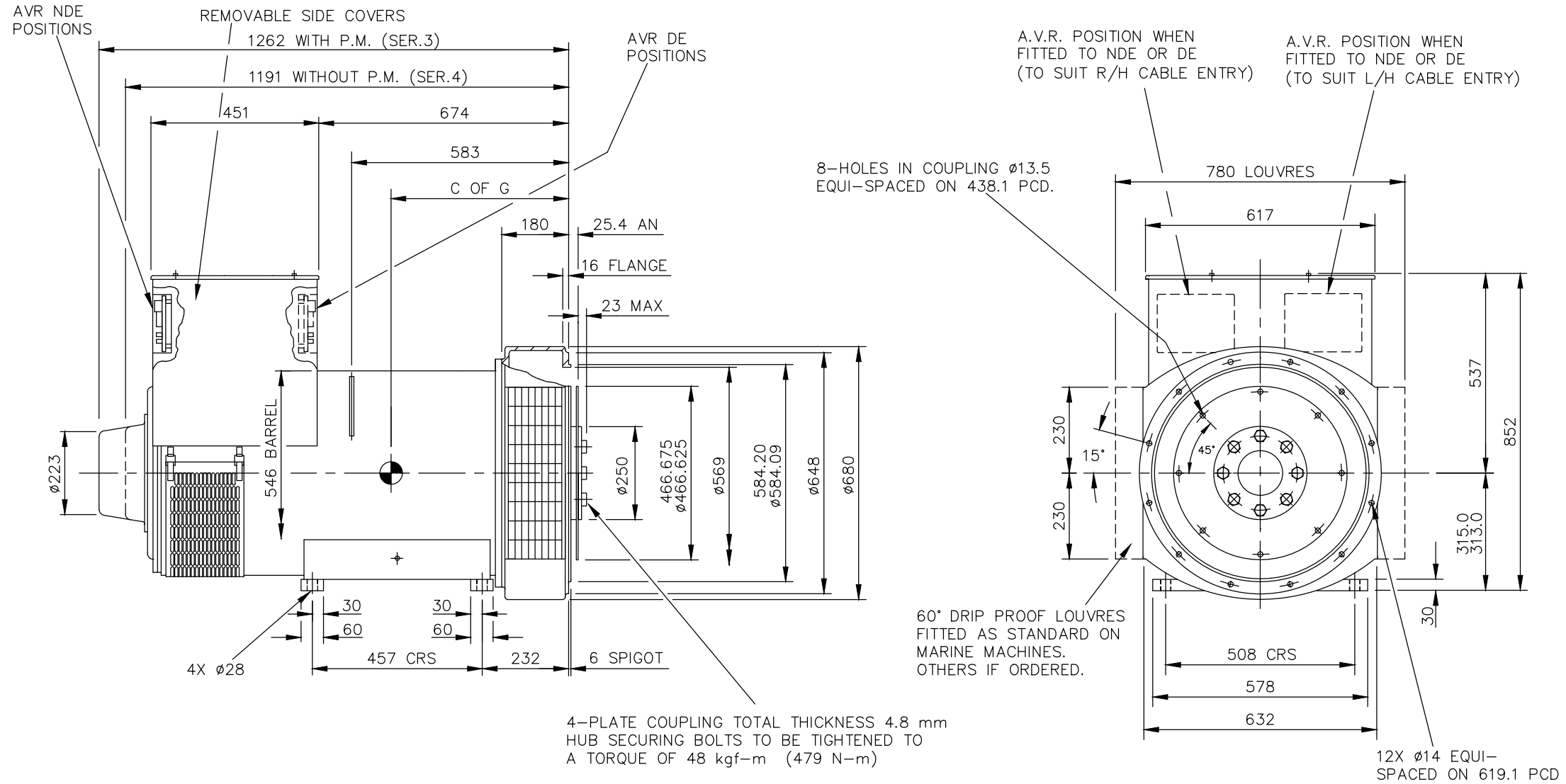
REL NO	REV	NO	REVISION	DWN	CKD	APVD	DATE
ECO-171701	B	1	ZONE D4,ADDED WEIGHT (1160KG) FOR F CORE	SA	PN	S_NARAYANAN	04SEP17

NOTE: -

- CUSTOMER MAY CUT CABLE ENTRY HOLES AS REQUIRED IN ANY OF THE FOUR TERMINAL BOX SIDES SUBJECT TO POSITION OF A.V.R, TERMINALS ETC.

D
C
B
A

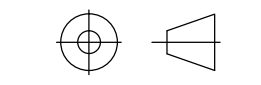
D
C
B
A



UNLESS OTHERWISE SPECIFIED, ALL DIMENSIONS ARE IN MILLIMETERS

SIM TO 41-4543
DO NOT SCALE PRINT

SCALE
1:10



THIS DOCUMENT (AND THE INFORMATION SHOWN THEREON) IS CONFIDENTIAL AND PROPRIETARY AND SHALL NOT BE DISCLOSED TO OTHERS IN HARD COPY OR ELECTRONIC FORM, REPRODUCED BY ANY MEANS, OR USED FOR ANY PURPOSE WITHOUT WRITTEN CONSENT OF CUMMINS INC.

DRAWN	S_BALAMURUGAN
CHECKED	A_BIRARI
APPROVED	B_SURVE
DATE	30JAN17



CUMMINS GENERATOR TECHNOLOGIES

DRAWING, GENERAL ASSEMBLY

S4 F 1-BRG SAE 0.5/14 STD T/BOX

FOR INTERPRETATION OF DIMENSIONING AND TOLERANCING, SEE ASME Y14.5-2009	FIRST USED ON S4
---	---------------------

SITE CODE

STA

DWG SIZE
A4

A057B581

CAD SHEET
1 of 1

4

3

2

1