

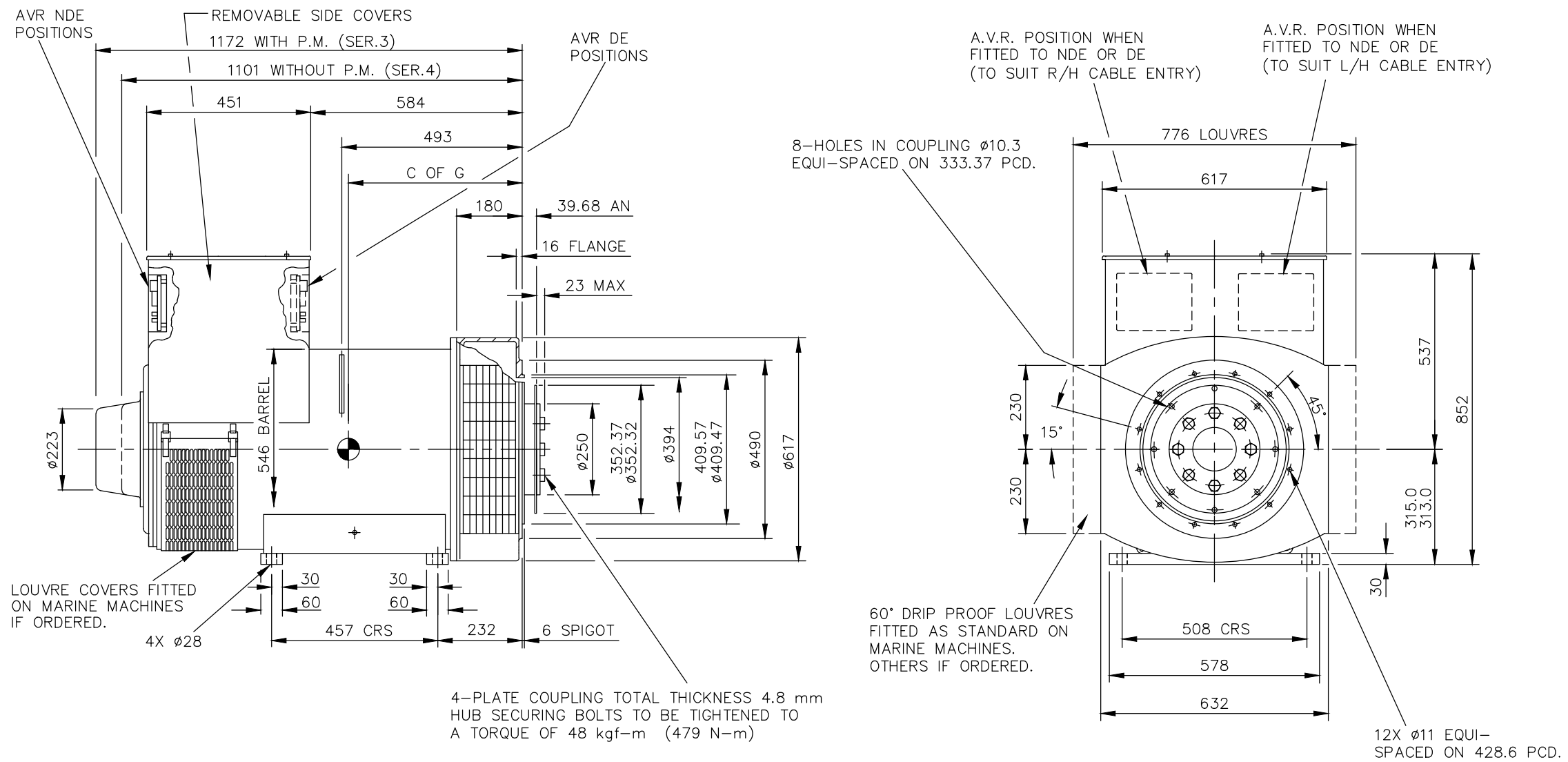
AutoCad

| CORE | C OF G (mm) | WEIGHT(KG) |
|------|-------------|------------|
| C    | 463         | 850        |
| D    | 483         | 940        |
| E    | 504         | 1024       |

| REL NO     | REV | NO | REVISION                                 | DWN | CKD | APVD        | DATE    |
|------------|-----|----|--|-----|-----|-------------|---------|
| ECO-171701 | B   | 1  | ZONE D4,ADDED WEIGHT (850KG) FOR C CORE  | SA  | PN  | S_NARAYANAN | 04SEP17 |
|            |     | 2  | ZONE D4,ADDED WEIGHT (940KG) FOR D CORE  | SA  | PN  | S_NARAYANAN | 04SEP17 |
|            |     | 3  | ZONE D4,ADDED WEIGHT (1024KG) FOR E CORE | SA  | PN  | S_NARAYANAN | 04SEP17 |

NOTE:-

- CUSTOMER MAY CUT CABLE ENTRY HOLES AS REQUIRED IN ANY OF THE FOUR TERMINAL BOX SIDES SUBJECT TO POSITION OF A.V.R, TERMINALS ETC.



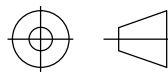
4-PLATE COUPLING TOTAL THICKNESS 4.8 mm  
HUB SECURING BOLTS TO BE TIGHTENED TO A TORQUE OF 48 kgf-m (479 N-m)

UNLESS OTHERWISE SPECIFIED, ALL DIMENSIONS ARE IN MILLIMETERS

SIM TO 41-4525

DO NOT SCALE PRINT

SCALE  
1:10



THIS DOCUMENT (AND THE INFORMATION SHOWN THEREON) IS CONFIDENTIAL AND PROPRIETARY AND SHALL NOT BE DISCLOSED TO OTHERS IN HARD COPY OR ELECTRONIC FORM, REPRODUCED BY ANY MEANS, OR USED FOR ANY PURPOSE WITHOUT WRITTEN CONSENT OF CUMMINS INC.

DRAWN S\_BALAMURUGAN

CHECKED A\_BIRARI

APPROVED B\_SURVE

DATE 27JAN17

FOR INTERPRETATION OF DIMENSIONING AND TOLERANCING, SEE ASME Y14.5-2009

FIRST USED ON

S4



SITE CODE

STA

CUMMINS GENERATOR TECHNOLOGIES

DRAWING, GENERAL ASSEMBLY

S4 CDE 1-BRG GA STD T/BOX

DWG SIZE  
A4

A057B566

CAD SHEET  
1 of 1