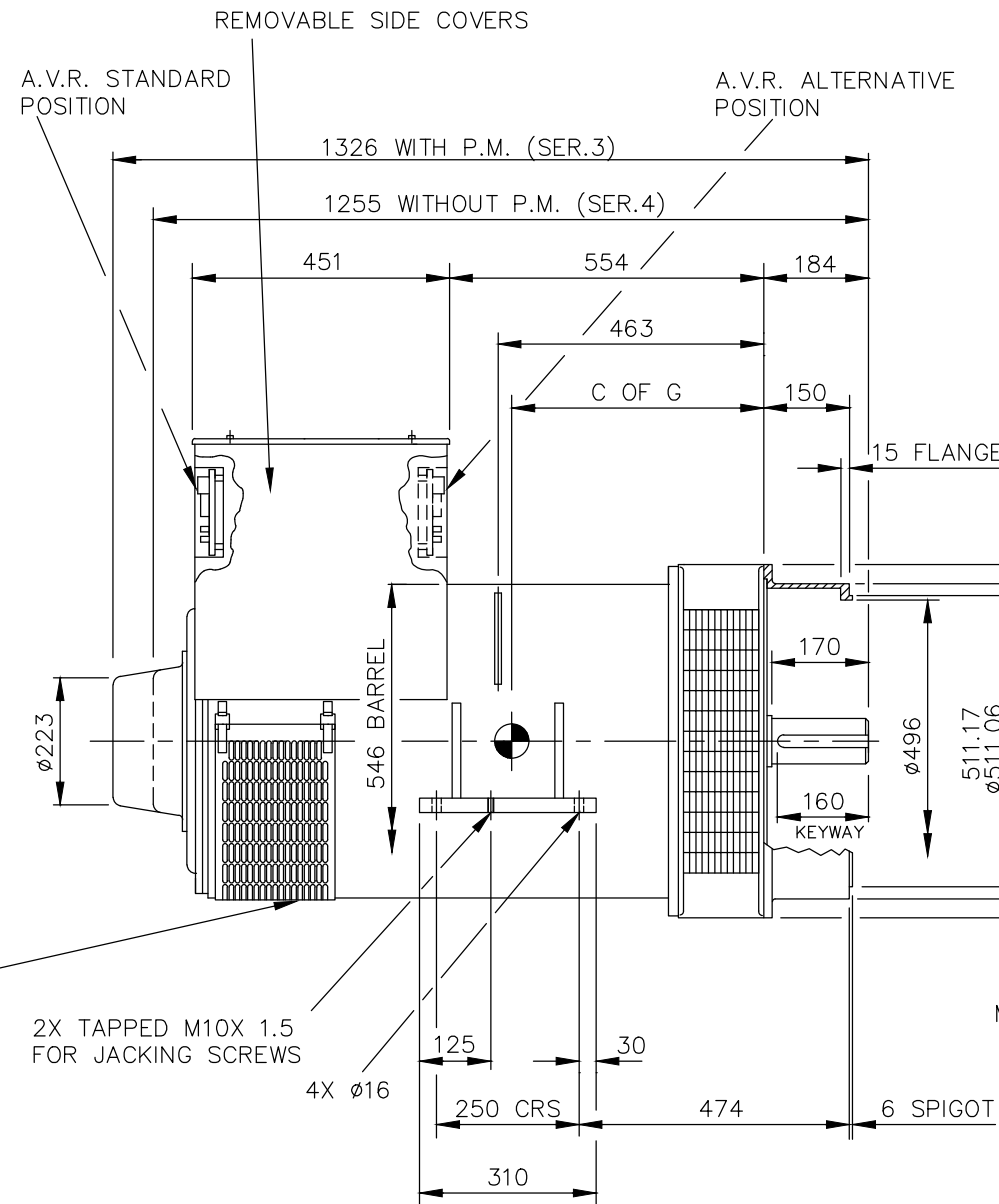
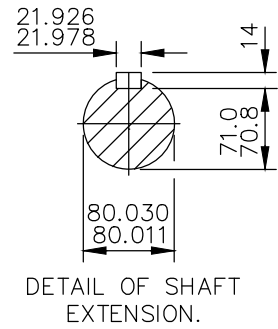


CORE	C OF G
C	433
D	453
E	474

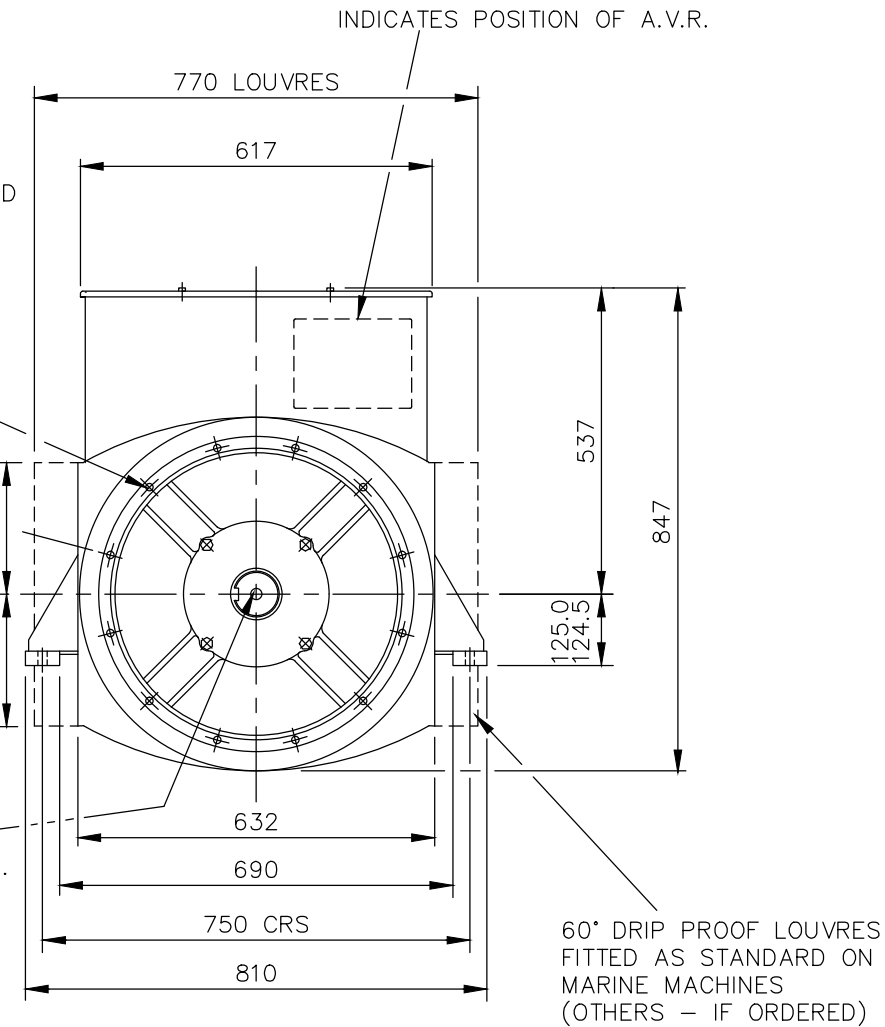
REL NO	REV	NO	REVISION	DWN	CKD	APVD	DATE
ECO-166159	A	1	RELEASED FOR PRODUCTION	AL	AB	B_SURVE	14NOV16

NOTE: -  
 1. CUSTOMER MAY CUT CABLE ENTRY HOLES AS REQUIRED IN ANY OF THE FOUR TERMINAL BOX SIDES SUBJECT TO POSITION OF A.V.R. TERMINALS, ETC.



12X Ø11 EQUI-SPACED ON 530.2 PCD.

M20X 2.5PX 40 DEEP.



LOUVRE COVERS FITTED ON MARINE MACHINES IF ORDERED.

2X TAPPED M10X 1.5 FOR JACKING SCREWS

4X Ø16

60° DRIP PROOF LOUVRES FITTED AS STANDARD ON MARINE MACHINES (OTHERS - IF ORDERED)

UNLESS OTHERWISE SPECIFIED, ALL DIMENSIONS ARE IN MILLIMETERS	SIM TO 41-4514	DRAWN A_LAHEKAR		CUMMINS GENERATOR TECHNOLOGIES		
	DO NOT SCALE PRINT	CHECKED A_BIRARI		DRAWING, GENERAL ASSEMBLY		
SCALE 1:10		APPROVED B_SURVE	SITE CODE	S4 CDE 2-BRG, FEET 125Ø 750X 250 CRS, STD ADAPTOR-SAE1, STD SHAFT (Ø170X 80)		
THIS DOCUMENT (AND THE INFORMATION SHOWN THEREON) IS CONFIDENTIAL AND PROPRIETARY AND SHALL NOT BE DISCLOSED TO OTHERS IN HARD COPY OR ELECTRONIC FORM, REPRODUCED BY ANY MEANS, OR USED FOR ANY PURPOSE WITHOUT WRITTEN CONSENT OF CUMMINS INC.	DATE 14NOV16	FOR INTERPRETATION OF DIMENSIONING AND TOLERANCING, SEE ASME Y14.5-2009		FIRST USED ON S4	STA	DWG SIZE A4
						CAD SHEET 1 of 1