

AutoCad

4

3

2

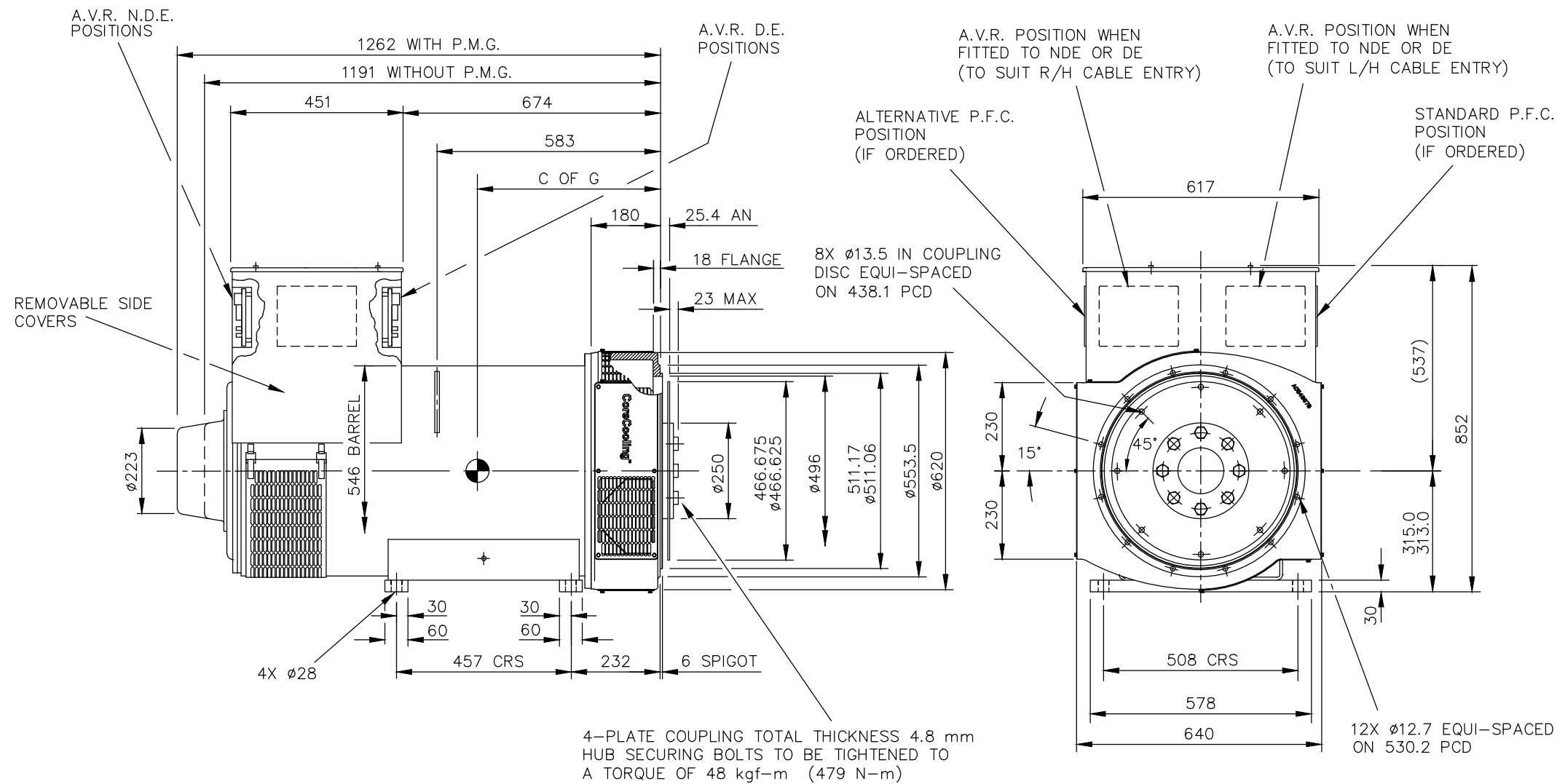
1

CORE	C OF G (mm)	WEIGHT(KG)
F	530	1160

REL NO	REV NO	REVISION	DWN	CKD	APVD	DATE
ECO-171793	C 1	ZONE D4, ADDED WEIGHT (1160KG) FOR F CORE	SA	PN	S_NARAYANAN	18SEP17

NOTE: -

- CUSTOMER MAY CUT CABLE ENTRY HOLES AS REQUIRED IN ANY OF THE FOUR TERMINAL BOX SIDES SUBJECT TO POSITION OF A.V.R, TERMINALS ETC.



UNLESS OTHERWISE SPECIFIED, ALL DIMENSIONS ARE IN MILLIMETERS

SIM TO 41-4540

DO NOT SCALE PRINT

SCALE 1:10

THIS DOCUMENT (AND THE INFORMATION SHOWN THEREON) IS CONFIDENTIAL AND PROPRIETARY AND SHALL NOT BE DISCLOSED TO OTHERS IN HARD COPY OR ELECTRONIC FORM, REPRODUCED BY ANY MEANS, OR USED FOR ANY PURPOSE WITHOUT WRITTEN CONSENT OF CUMMINS INC.

DRAWN P_PACHPUTE

CHECKED A_BIRARI

APPROVED B_SURVE

DATE 11JAN17

FIRST USED ON S4

Cummins

SITE CODE STA

CUMMINS GENERATOR TECHNOLOGIES

DRAWING, GENERAL ASSEMBLY

S4L1D F 1-BRG SAE1/14, FLEX FOOT STD T/BOX

DWG SIZE A4

A055J602

CAD SHEET 1 of 1

4

3

2

1

A

A