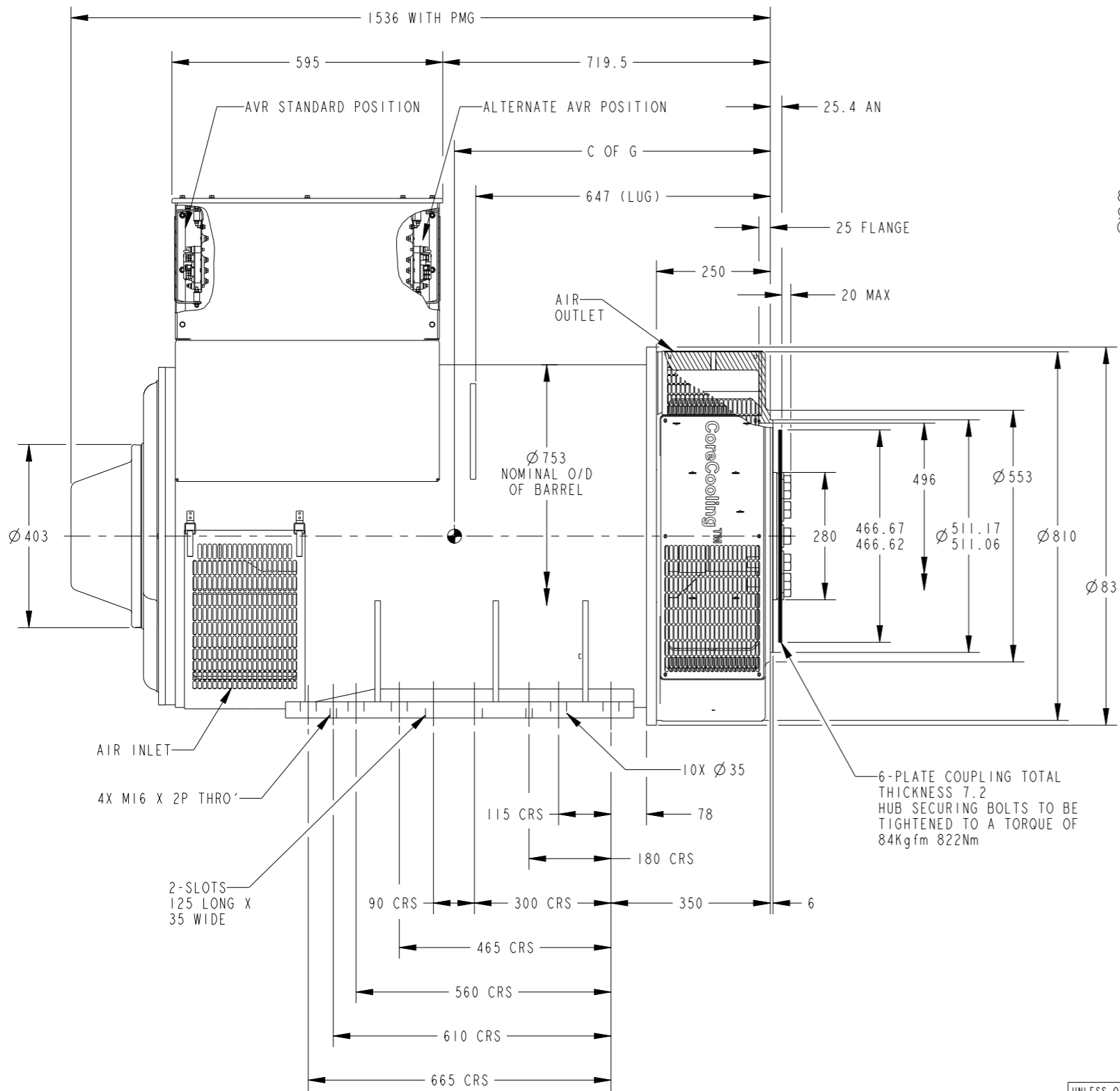


PTC® Creo® Parametric		
CORE	WEIGHT(KG)	C OF G
E	2020	678
F	2326	699

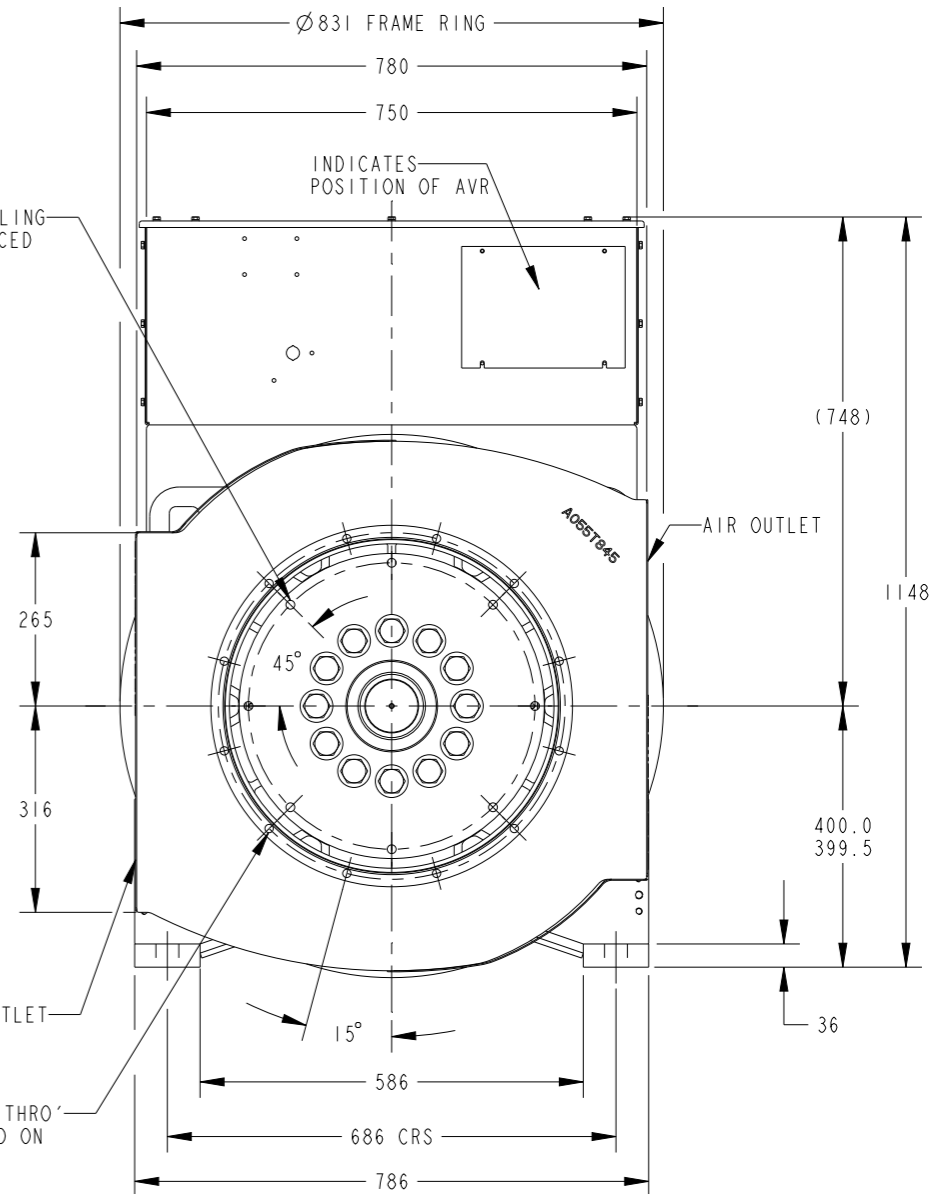
REL NO	REV	NO	REVISION	DWN	CKD	APVD	DATE
ECO-174329	B	1	ZONE D4, C OF G FOR CORE F 699 WAS 702	KP	RH	I.SAUNDATTI	09JAN18
		2	ZONE B1, DIM 36 WAS 34.0	KP	RH	I.SAUNDATTI	09JAN18
		3	ZONE D1, RMV DIM 772, ADDED DIM 780 & 750	KP	RH	I.SAUNDATTI	09JAN18
		4	ZOME B3, ADDED DIM 78, RMV DIM 50	KP	RH	I.SAUNDATTI	09JAN18

NOTE:

1. CUSTOMER MUST ENSURE THAT AIR INLET AND OUTLET POSITIONS ARE NOT OBSTRUCTED



8-HOLES IN COUPLING Ø 13.5 EQUI-SPACED ON 438.1 PCD



UNLESS OTHERWISE SPECIFIED, ALL DIMENSIONS ARE IN MILLIMETERS	SIM TO -	DWN K_PATIL		CUMMINS GENERATOR TECHNOLOGIES	
	DO NOT SCALE PRINT	CKD S_KARMARKAR		DRAWING, GENERAL ASSEMBLY	
SCALE 0.130		APVD I_SAUNDATTI	SITE CODE	S6LID-E/F 1B SAE1-14, STD BOX	
THIS DOCUMENT (AND THE INFORMATION SHOWN THEREON) IS CONFIDENTIAL AND PROPRIETARY AND SHALL NOT BE DISCLOSED TO OTHERS IN HARD COPY OR ELECTRONIC FORM, REPRODUCED BY ANY MEANS, OR USED FOR ANY PURPOSE WITHOUT WRITTEN CONSENT OF CUMMINS INC.	DATE 08JUN17	FIRST USED ON S6		STA	DWG SIZE A2
		FOR INTERPRETATION OF DIMENSIONING AND TOLERANCING, SEE ASME Y14.5-2009			CAD SHEET 1 of 1