

# STAMFORD

## S0L2-G1 Winding 14

### S0L2-G1 - Technical Data Sheet

#### Standards

Stamford industrial alternators meet the requirements of IEC EN 60034 and the relevant section of other international standards such as BS5000, VDE 0530, NEMA MG1-32, IEC34, CSA C22.2-100 and AS1359. Other standards and certifications can be considered on request.

#### Quality Assurance

Alternators are manufactured using production procedures having a quality assurance level to BS EN ISO 9001.



#### Excitation and Voltage Regulators

Excitation System	
<b>AVR Type</b>	<b>AVR Power</b>
VITA01	Self-Excited
Voltage Regulation	± 0.5%
No Load Excitation Voltage (V)	12.3 V
Full Load Excitation Voltage (V)	49.0 V

# STAMFORD

## S0L2-G1 Winding 14

Electrical Data				
Insulation System	Class H			
Stator Winding	Double Layer Concentric			
Winding Pitch	Two Thirds			
Winding Leads	12			
Winding Number	14			
Number of Poles	4			
IP Rating	IP23			
RFI Suppression	EN 61000-6-2 & EN 61000-6-4, refer to factory for others			
Waveform Distortion	NO LOAD < 2.5% NON-DISTORTING BALANCED LINEAR LOAD < 5.0%			
Short Circuit Ratio	1/Xd			
Steady State X/R Ratio	N/A			
<b>60 Hz</b>				
Telephone Interference	TIF<75			
Voltage Series Star	380	400	416	-
Voltage Parallel Star	190	200	208	-
Voltage Series Delta	220	230	240	-
kVA Base Rating (Class H)	25	25	25	-
Saturated Values in Per Unit at Base Ratings and Voltages				
Xd Dir. Axis Synchronous	1.605	1.448	1.339	-
X'd Dir. Axis Transient	0.158	0.143	0.132	-
X''d Dir. Axis Subtransient	0.133	0.120	0.111	-
Xq Quad. Axis Reactance	1.498	1.352	1.250	-
X''q Quad. Axis Subtransient	0.165	0.149	0.138	-
XL Stator Leakage Reactance	0.087	0.079	0.073	-
X2 Negative Sequence Reactance	0.250	0.226	0.209	-
X0 Zero Sequence Reactance	0.050	0.045	0.042	-
Unsaturated Values in Per Unit at Base Ratings and Voltages				
Xd Dir. Axis Synchronous	1.926	1.738	1.607	-
X'd Dir. Axis Transient	0.182	0.164	0.152	-
X''d Dir. Axis Subtransient	0.156	0.140	0.130	-
Xq Quad. Axis Reactance	1.543	1.393	1.288	-
X''q Quad. Axis Subtransient	0.198	0.179	0.166	-
XL Stator Leakage Reactance	0.099	0.089	0.082	-
X2 Negative Sequence Reactance	0.301	0.271	0.251	-
X0 Zero Sequence Reactance	0.059	0.053	0.049	-
Time Constants (Seconds)				
T'd TRANSIENT TIME CONST.	0.019			
T''d SUB-TRANSTIME CONST.	0.002			
T'do O.C. FIELD TIME CONST.	0.51			
Ta ARMATURE TIME CONST.	0.005			

# STAMFORD

## S0L2-G1 Winding 14

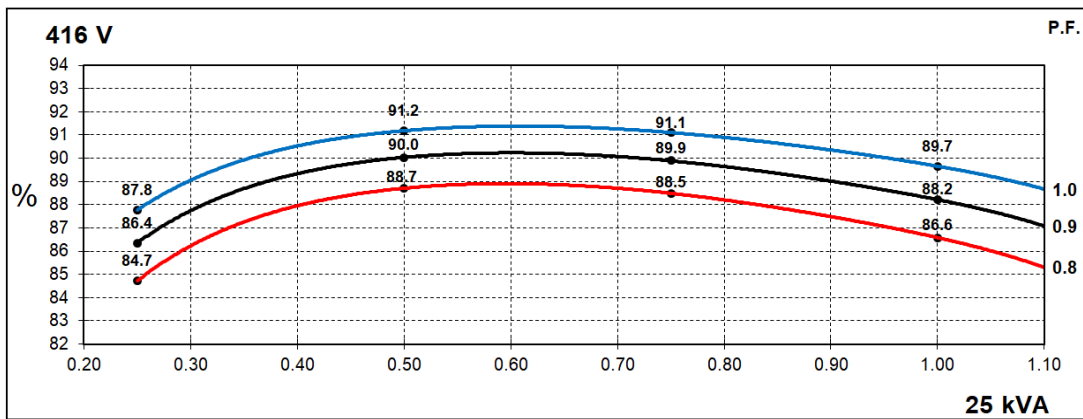
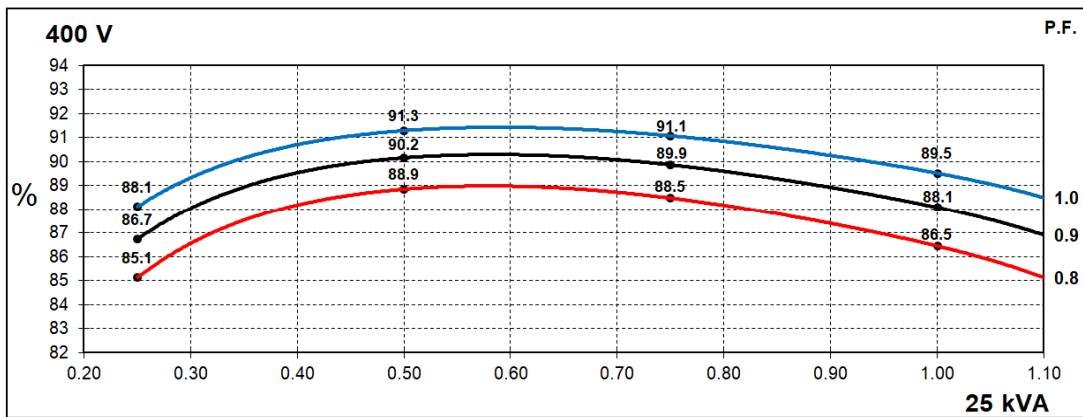
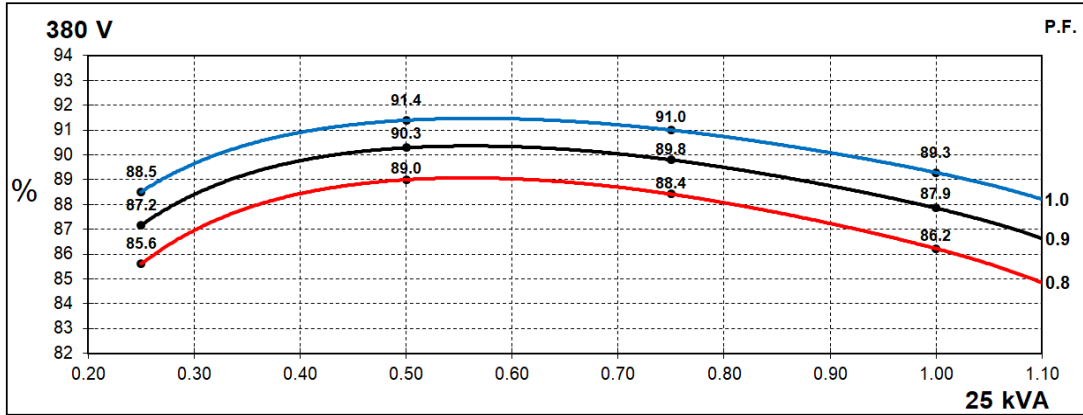
Resistances in Ohms ( $\Omega$ ) at 22°C	
Stator Winding Resistance (Ra)	0.272 $\Omega$ per phase series star connected
Rotor Winding Resistance (Rf)	0.644 $\Omega$
Exciter Stator Winding Resistance	14.624 $\Omega$
Exciter Rotor Winding Resistance	0.135 $\Omega$ per phase
Positive Sequence Resistance (R1)	0.34 $\Omega$
Negative Sequence Resistance (R2)	0.392 $\Omega$
Zero Sequence Resistance (R0)	0.34 $\Omega$
Aux Winding Resistance	N/A
Mechanical data	
Cooling Air	0.126 m <sup>3</sup> /sec
Shaft and Keys	All alternator rotors are dynamically balanced to better than BS6861: Part 1 Grade 2.5 for minimum vibration in operation.
Bearing	Single Bearing
Weight Complete Alternator	106.5 kg
Weight Wound Stator	42.3 kg
Weight Wound Rotor	36.8 kg
Moment of Inertia	0.127 kgm <sup>2</sup>
Shipping weight in a Crate	145 kg
Packing Crate Size	930X590X760 mm
Maximum Over Speed	2250 RPM for two minutes
Bearing Drive End	N/A
Bearing Non-Drive End	Ball Bearing, 6305-2RS1

# STAMFORD®

## S0L2-G1 Winding 14

### Three Phase Efficiency Curves

#### 60Hz Curves

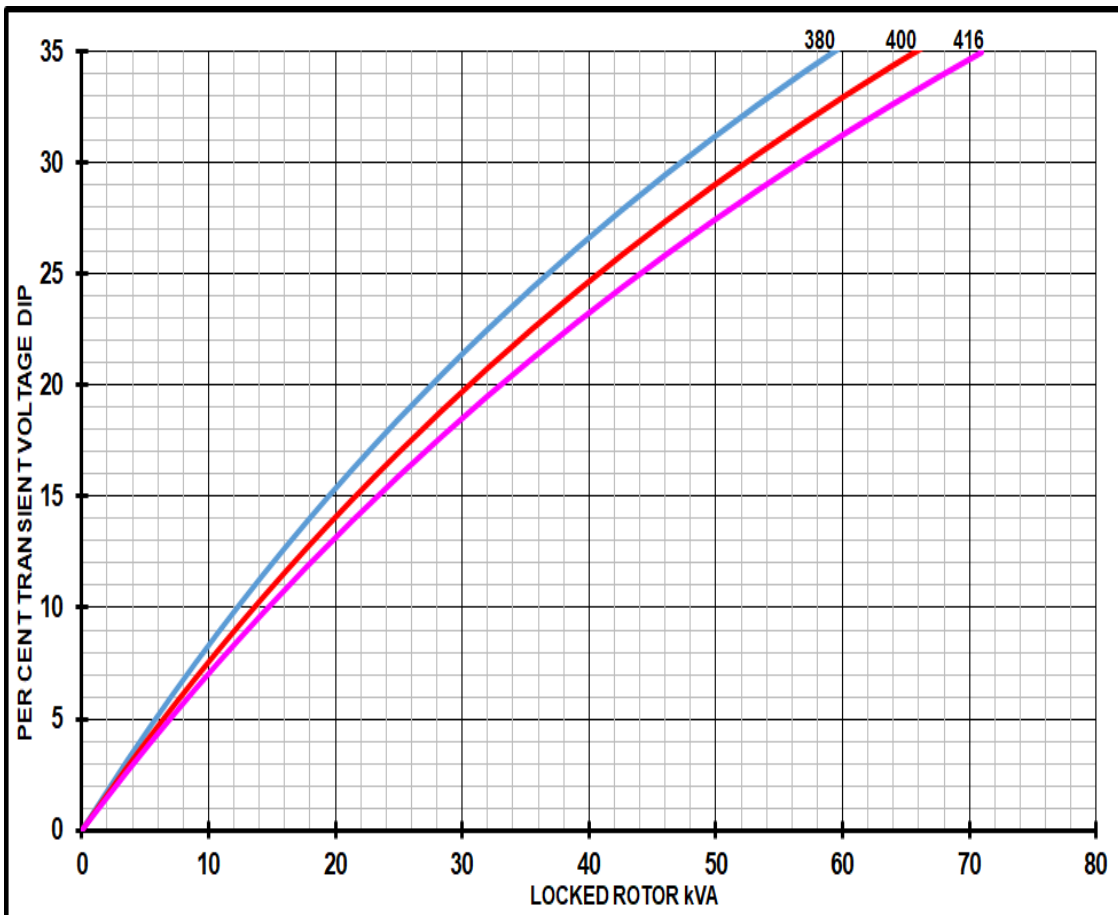


# STAMFORD

## S0L2-G1 Winding 14

### Locked Rotor Motor Starting Curves

**60Hz**



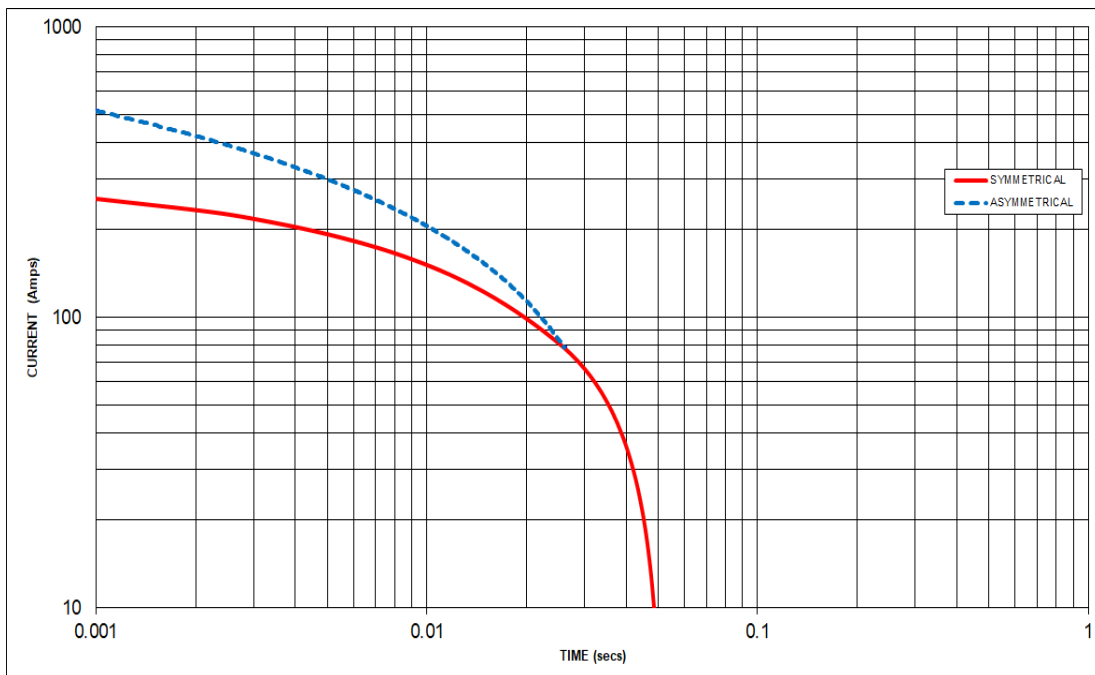
Transient Voltage Dip Scaling Factor		Transient Voltage Rise Scaling Factor	
Lagging PF	Scaling Factor	Lagging PF	Scaling Factor
<= 0.4	1.00	<= 0.4	1.25
0.5	0.95	0.5	1.20
0.6	0.90	0.6	1.15
0.7	0.86	± 0.5%	1.10
0.8	0.83	> 0.7	1.00
0.9	0.75		
0.95	0.70		
1	0.65		

**Note:** To determine % Transient Voltage Dip or Rise at various PF, multiply the % Voltage Dip from the curve directly by the scaling factor.

# STAMFORD

## S0L2-G1 Winding 14 Three-phase Short Circuit Decrement Curve

**60Hz**



### Note 1

The following multiplication factors should be used to adjust the values from curve between time 0.001 seconds and the minimum current point in respect of nominal operating voltage :

50Hz		60Hz	
Voltage	Factor	Voltage	Factor
-	-	380V	X 1.00
-	-	400V	X 1.05
-	-	416V	X 1.09
-	-	-	-

The sustained current value is constant irrespective of voltage level

### Note 2

The following multiplication factor should be used to convert the values calculated in accordance with NOTE 1 to those applicable to the various types of short circuit :

± 0.5%	3-phase	2-phase L-L	1-phase L-N
Instantaneous	x 1.00	x 0.87	x 1.30
Minimum	x 1.00	x 1.80	x 3.20
Sustained	N/A	N/A	N/A
Max. sustained duration	10 sec.	5 sec.	2 sec.

All other times are unchanged

### Note 3

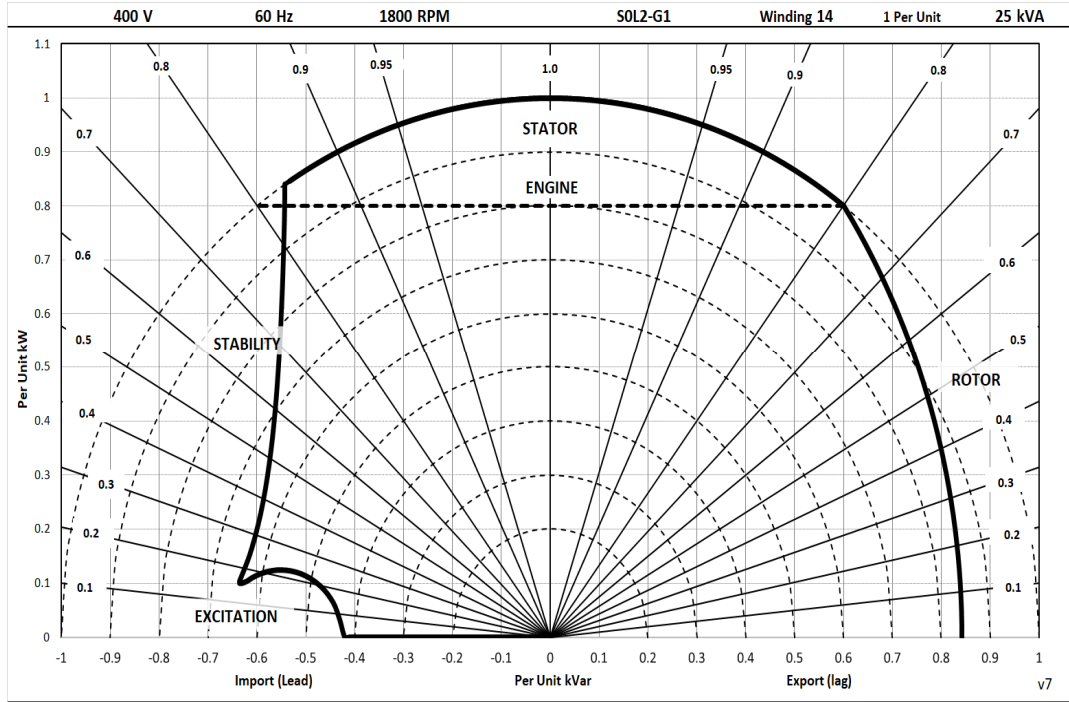
Curves are drawn for Star connected machines under no-load excitation at rated speeds. For other connection the following multipliers should be applied to current values as shown :  
 Parallel Star = Curve current value X 2  
 Series Delta = Curve current value X 1.732

# STAMFORD

## S0L2-G1 Winding 14

### Typical Alternator Operating Charts

**400V/60Hz**



# STAMFORD®

## S0L2-G1 Winding 14

### RATINGS AT 0.8 POWER FACTOR

Class - Temp Rise	Standby - 163/27°C	Standby - 150/40°C	Cont. H - 125/40°C	Cont. F - 105/40°C
<b>5</b>	Series Star (V)			
	Parallel Star (V)	N/A	N/A	N/A
	Series Delta (V)			
	kVA			
	kW	N/A	N/A	N/A
	Efficiency (%)			
	kW Input			

<b>6</b>	Series Star (V)	380	400	416	-	380	400	416	-	380	400	416	-	380	400	416	-	
	Parallel Star (V)	190	200	208	-	190	200	208	-	190	200	208	-	190	200	208	-	
	Series Delta (V)	220	230	240	-	220	230	240	-	220	230	240	-	220	230	240	-	
		kVA	27.3	27.3	27.3	-	26.3	26.3	26.3	-	25.0	25.0	25.0	-	22.5	22.5	22.5	-
		kW	21.8	21.8	21.8	-	21.0	21.0	21.0	-	20.0	20.0	20.0	-	18.0	18.0	18.0	-
		Efficiency (%)	85.0	85.3	85.5	-	85.6	85.8	86.0	-	86.2	86.5	86.6	-	87.3	87.5	87.5	-
		kW Input	25.7	25.6	25.5	-	24.6	24.5	24.5	-	23.2	23.1	23.1	-	20.6	20.6	20.6	-

#### De-Rates

All values tabulated above are subject to the following reductions:

- 3% for every 500 meters by which the operating altitude exceeds 1000 meters above mean sea level
- 3% for every 5°C by which the operational ambient temperature exceeds 40°C
- For any other operating conditions impacting the cooling circuit please refer to applications

Note: Requirement for operating in an ambient exceeding 60°C and altitude exceeding 4000 meters must be referred to applications.

#### Dimensional and Torsional Drawing

For dimensional and torsional information please refer to the alternator General Arrangement and rotor drawings available on our website (<http://stamford-avk.com/>)

**Note:** Continuous development of our products means that the information contained in our data sheets can change without notice, and specifications should always be confirmed with Cummins Generator Technologies prior to purchase.

± 0.5%





Follow us @stamfordavk



Cummins Generator Technologies



View our videos at [youtube.com/stamfordavk](https://youtube.com/stamfordavk)

**[news.stamford-avk.com](https://news.stamford-avk.com)**

**For Applications Support:**  
**[applications@cummins.com](mailto:applications@cummins.com)**

± 0.5%

**For Customer Service:**  
**[service-engineers@stamford-avk.com](mailto:service-engineers@stamford-avk.com)**

**For General Enquiries:**  
**[info@cumminsgeneratortechnologies.com](mailto:info@cumminsgeneratortechnologies.com)**

Copyright 2024. Cummins Generator Technologies Ltd. All rights reserved.  
Cummins and the Cummins logo are registered trade marks of Cummins Inc.  
STAMFORD is a registered trade mark of Cummins Generator Technologies Ltd.

