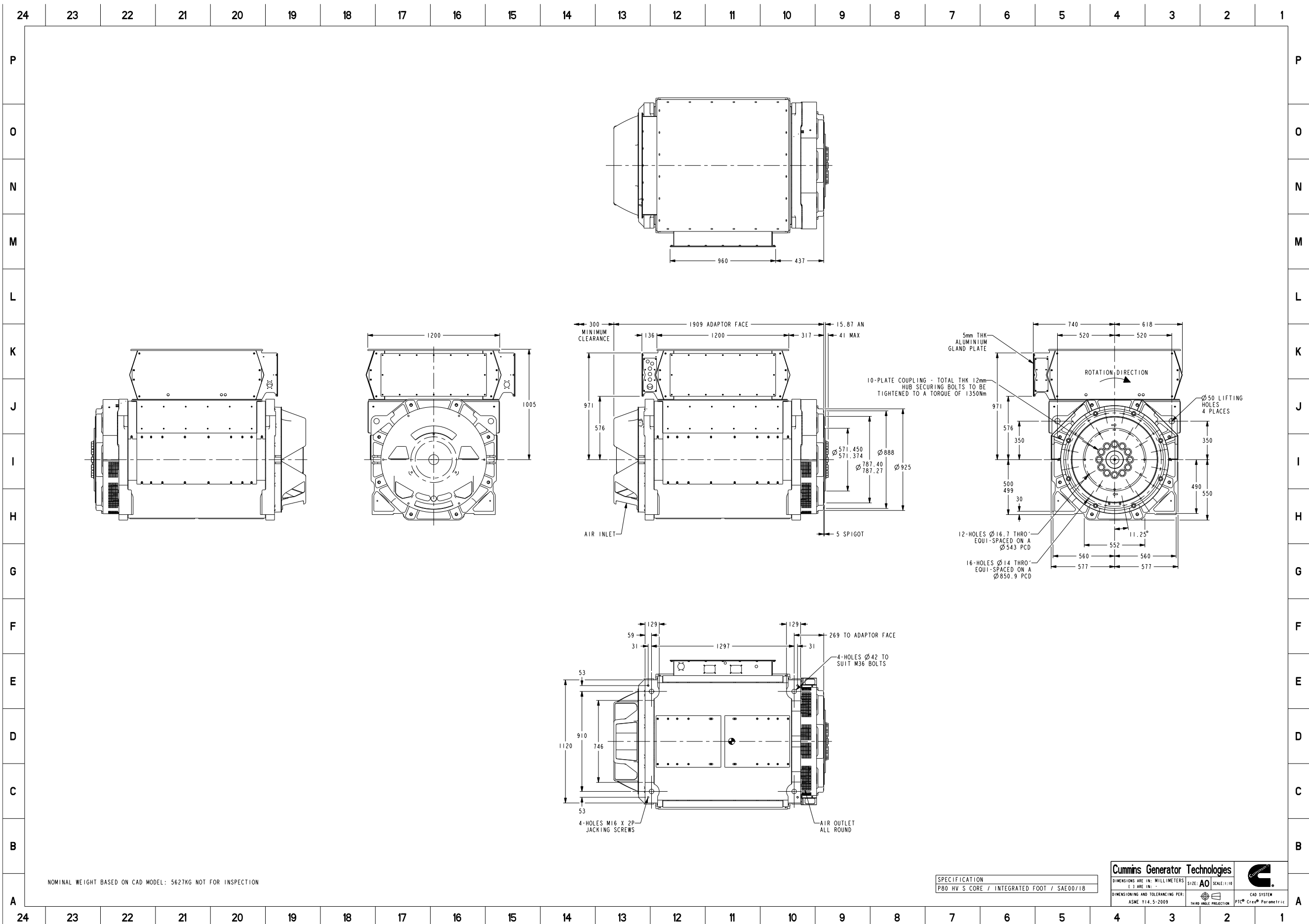


NOMINAL WEIGHT BASED ON CAD MODEL: 5627KG NOT FOR INSPECTION

SPECIFICATION
P80 HV S CORE / INTEGRATED FOOT / SAE00/18

Cummins Generator Technologies			
DIMENSIONS ARE IN: MILLIMETERS () ARE IN: -	SIZE: A2	SCALE: 1:10	
DIMENSIONING AND TOLERANCING PER: ASME Y14.5-2009		THIRD ANGLE PROJECTION	
		CAD SYSTEM PTC® Creo® Parametric	

Document Generated: 23FEB2021 12:31 GMT



Document Generated: 23FEB2021 12:31 GMT



Part Number: A040U971

Change Notice	CN00030227	Alternates	
Manufacturer Part (MEP)	No	Usage	Production Only
Release Phase Code	Production (P)	Drawing Specification	DSA040U971
External Regulations	No External Regulation		

3D image provided when available for visual reference only.

Associated Specifications

Number	Name	Type	Category	Sub-Category
ESA030B356	SPECIFICATION,MATERIAL	Engineering Specification	Material Specification	Prohibited and Restricted Prohibited and Restricted

Drawing Revision Information

Description of Change(s)
END BRACKETS, WEIGHT, C OF G AND DRAWING BORDER UPDATED

Drawing Authorization

Drafter	Andrew Savill	Date	23FEB2021
Checker	Tony Charles Clarke	Date	23FEB2021
Approver	NO APPROVAL REQUIRED	Date	

Document Generated: 23FEB2021 12:31 GMT